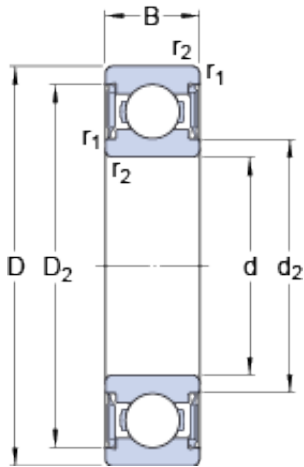




# USK BEARING COMPANY

9 mm x 30 mm x 10 mm skf W 639-2RS1 Deep groove ball bearings

Bearing No. W 639-2RS1



W 639-2RS1 Bearing 2D drawings and 3D CAD models

Size	30x9x10 mm
Bore Diameter	30 mm
Outer Diameter	9 mm
Width	10 mm
d	9 mm
D	30 mm
B	10 mm
d <sub>2</sub>	15.3 mm
D <sub>2</sub>	25.28 mm
r <sub>1,2</sub> - min.	0.6 mm
d <sub>a</sub> - min.	13 mm
d <sub>a</sub> - max.	15.2 mm
D <sub>a</sub> - max.	26 mm
r <sub>a</sub> - max.	0.6 mm
Basic dynamic load rating - C	4.9 kN
Basic static load rating - C <sub>0</sub>	2.3 kN
Fatigue load limit - P <sub>u</sub>	0.1 kN
Limiting speed	16000 r/min
Calculation factor - k <sub>r</sub>	0.035
Calculation factor - f <sub>0</sub>	12.9
d <sub>2</sub>	15.3 mm
D <sub>2</sub>	25.28 mm
r <sub>1,2</sub> min.	0.6 mm
d <sub>a</sub> min.	13 mm



## USK BEARING COMPANY

$d_a$ max.	15.2 mm
$D_a$ max.	26 mm
$r_a$ max.	0.6 mm
Basic dynamic load rating C	4.36 kN
Basic static load rating $C_0$	2.32 kN
Fatigue load limit $P_u$	0.1 kN
Calculation factor $k_r$	0.035
Calculation factor $f_0$	12.9
Mass bearing	0.035 kg