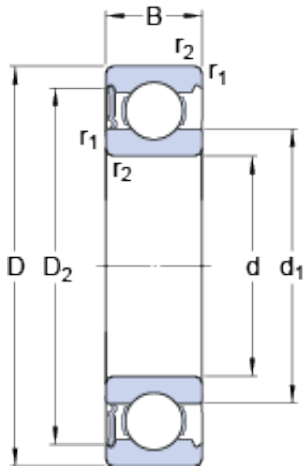




USK BEARING COMPANY



105 mm x 160 mm x 26 mm skf 6021-RS1 Deep groove ball bearings

Bearing No. 6021-RS1

6021-RS1 Bearing 2D drawings and 3D CAD models

Size	160x105x26 mm
Bore Diameter	160 mm
Outer Diameter	105 mm
Width	26 mm
d	105 mm
D	160 mm
B	26 mm
d ₁	122,5 mm
D ₂	146,8 mm
r _{1,2} - min.	2 mm
d _a - min.	116 mm
d _a - max.	122 mm
D _a - max.	149 mm
r _a - max.	2 mm
Basic dynamic load rating - C	76,1 kN
Basic static load rating - C ₀	65,5 kN
Fatigue load limit - P _u	2,4 kN
Limiting speed	2400 r/min
Calculation factor - k _r	0,025
Calculation factor - f ₀	16
d ₁	122.5 mm
D ₂	146.8 mm
r _{1,2} min.	2 mm
d _a min.	116 mm



USK BEARING COMPANY

d_a max.	122 mm
D_a max.	149 mm
r_a max.	2 mm
Basic dynamic load rating C	76.1 kN
Basic static load rating C_0	65.5 kN
Fatigue load limit P_u	2.4 kN
Calculation factor k_r	0.025
Calculation factor f_0	15.8
Mass bearing	1.64 kg